

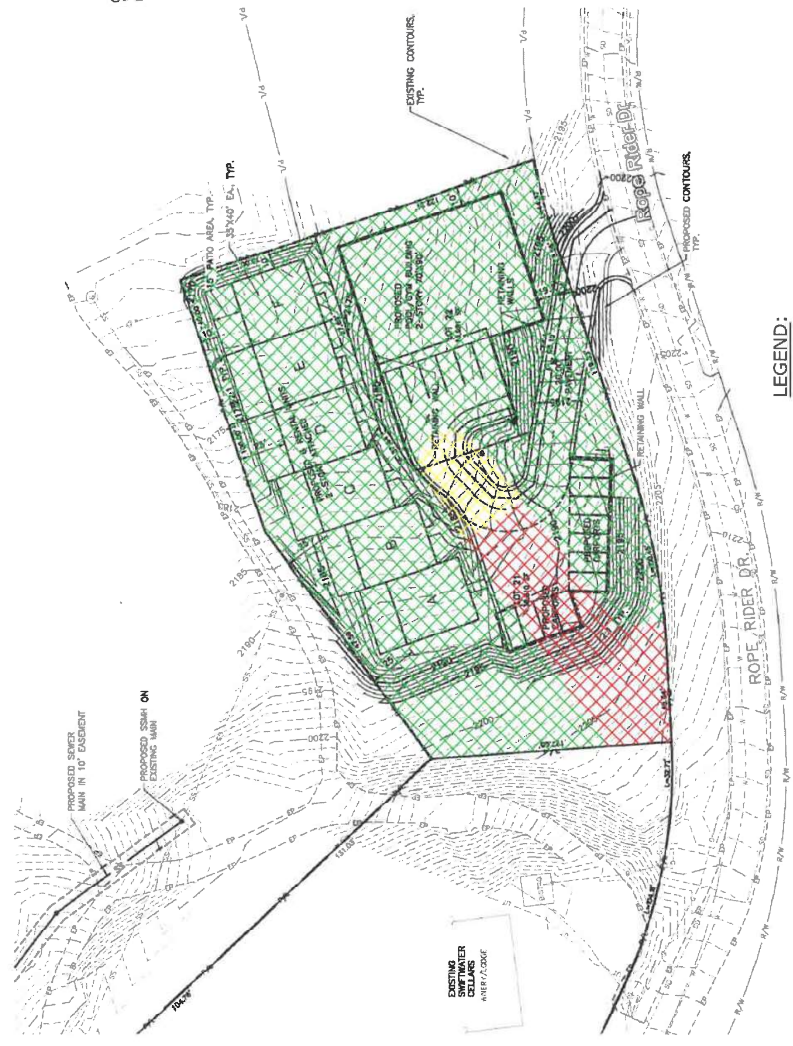
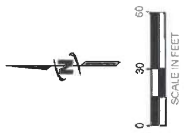
LEGEND:

- "Declassified" No Significant Mine Hazard - Buildable Areas
- Low Mine Hazard - Buildable Areas with Mitigation
- Moderate to Severe Mine Hazard - Unbuildable Areas*

(* refer to the geotechnical report for special mitigation measures)

NOTE: SITE LAYOUT HAS CHANGED SINCE THIS MAP WAS CREATED. NO BUILDABLE LOTS ARE NOW PLANNED IN MODERATE/SEVERE MINE HAZARD AREAS. UNDERLYING GEOTECHNICAL INFORMATION IS STILL VALID.

NOTE:
 Combined base maps extracted from Preliminary Utilities and Grading plans (Sheets 2 & 3) prepared by JUB Engineers, Inc. dated 8/1/2017.

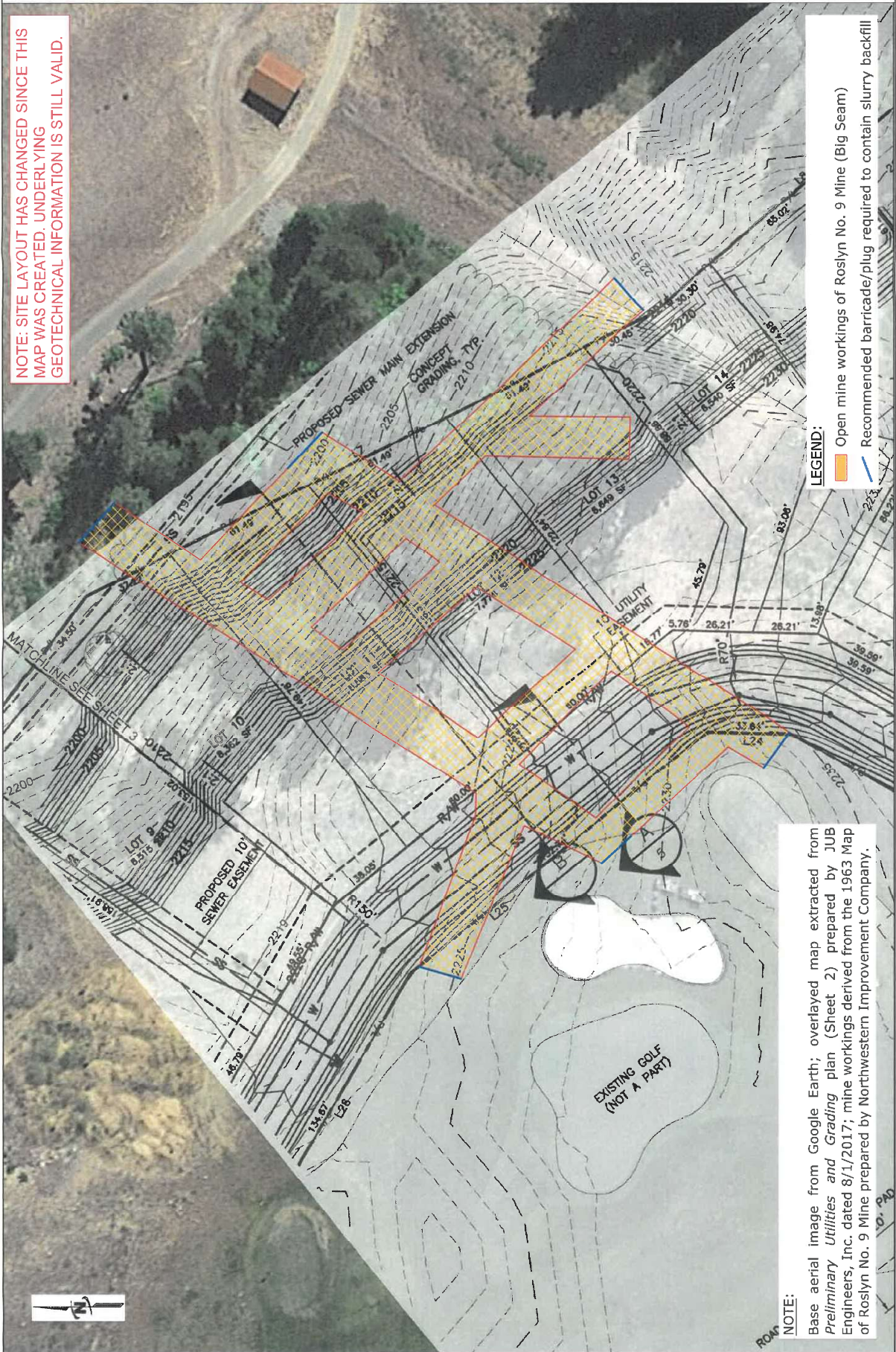


- LEGEND:**
- "Declassified" No Significant Mine Hazard - Buildable Areas
 - Low Mine Hazard - Buildable Areas with Mitigation
 - Moderate to Severe Mine Hazard - Unbuildable Areas*
 (* refer to the geotechnical report for special mitigation measures)

NOTE: SITE LAYOUT HAS CHANGED SINCE THIS MAP WAS CREATED - THIS AREA NO LONGER PLANNED FOR DEVELOPMENT AND WILL BE OPEN SPACE. UNDERLYING GEOTECHNICAL INFORMATION IS STILL VALID.

NOTE:
 Base map extracted from *Preliminary Utilities and Grading plan*
 (Sheet 4) prepared by JUB Engineers, Inc. dated 7/27/2017.

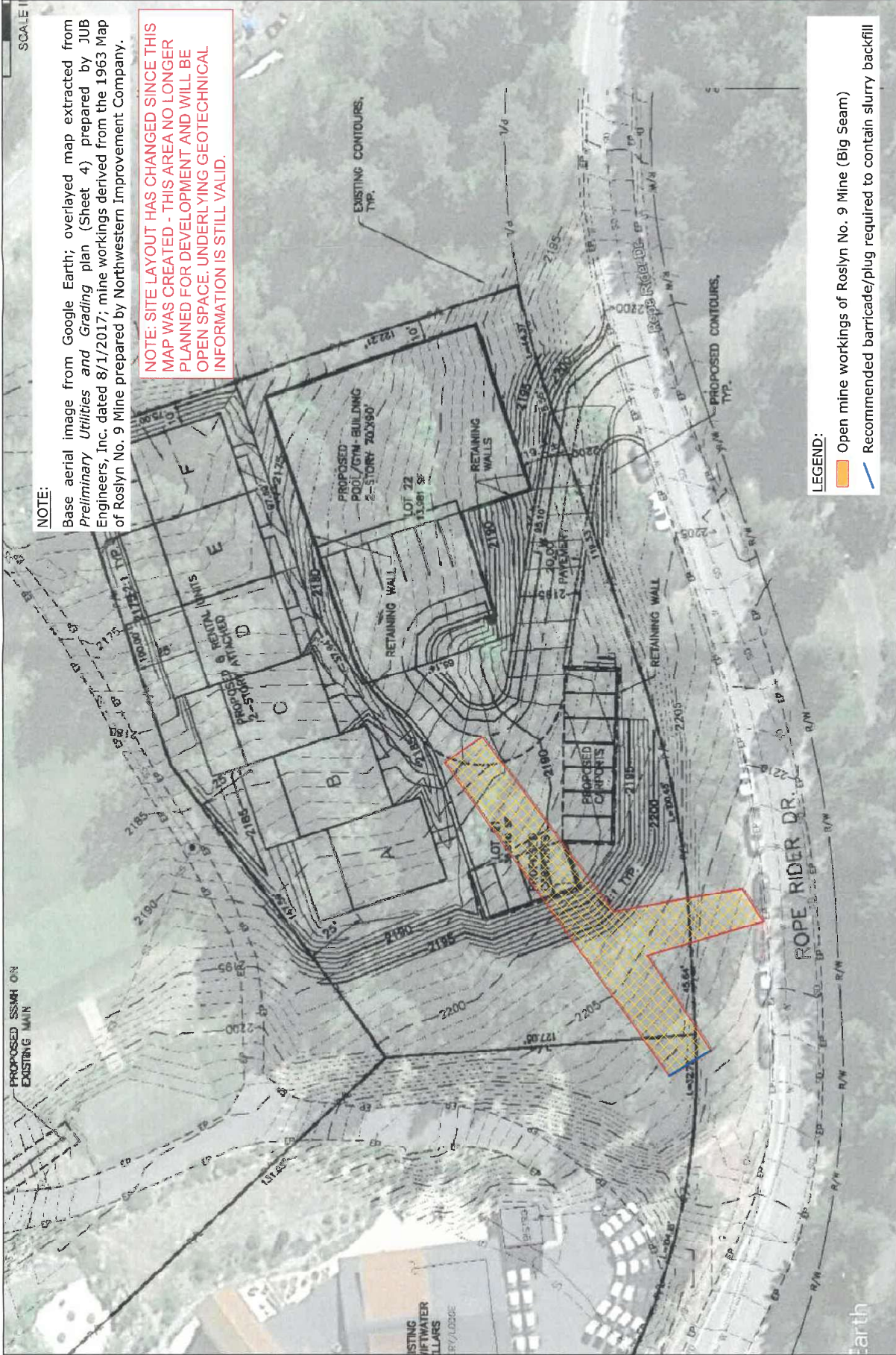
NOTE: SITE LAYOUT HAS CHANGED SINCE THIS MAP WAS CREATED. UNDERLYING GEOTECHNICAL INFORMATION IS STILL VALID.



LEGEND:

- Open mine workings of Roslyn No. 9 Mine (Big Seam)
- Recommended barricade/plug required to contain slurry backfill

NOTE:
 Base aerial image from Google Earth; overlaid map extracted from Preliminary Utilities and Grading plan (Sheet 2) prepared by JUB Engineers, Inc. dated 8/1/2017; mine workings derived from the 1963 Map of Roslyn No. 9 Mine prepared by Northwestern Improvement Company.



NOTE:

Base aerial image from Google Earth; overlaid map extracted from Preliminary Utilities and Grading plan (Sheet 4) prepared by JUB Engineers, Inc. dated 8/1/2017; mine workings derived from the 1963 Map of Roslyn No. 9 Mine prepared by Northwestern Improvement Company.

NOTE: SITE LAYOUT HAS CHANGED SINCE THIS MAP WAS CREATED - THIS AREA NO LONGER PLANNED FOR DEVELOPMENT AND WILL BE OPEN SPACE. UNDERLYING GEOTECHNICAL INFORMATION IS STILL VALID.

LEGEND:

- Open mine workings of Roslyn No. 9 Mine (Big Seam)
- Recommended barricade/plug required to contain slurry backfill